

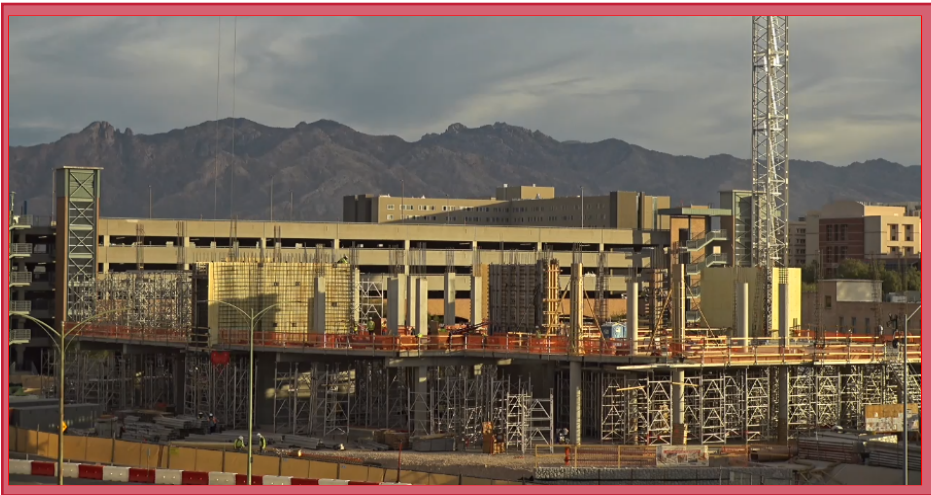


THE UNIVERSITY
OF ARIZONA

APPLIED RESEARCH BUILDING

DATE: 11/29/21-12/05/21

PHASE: **Project Overview**



Facing North View



Facing South View



McCarthy + SmithGroup
ARB Design Build Team

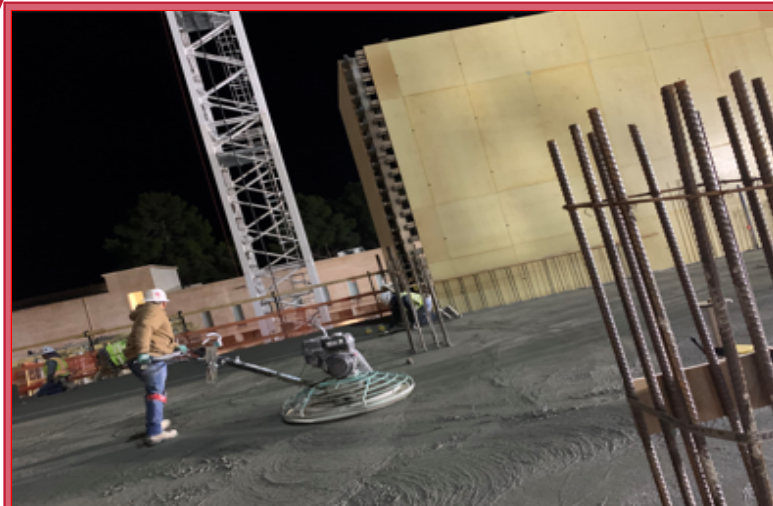
APPLIED RESEARCH BUILDING

DATE: 11/29/21-12/05/21

PHASE: Concrete Deck



East Level 2 Deck is Poured



Finishing East Level 2 Deck

Fun Fact:

The East Deck of Level 2 is approximately 10K sf and 14" deep. For quality assurance purposes, the finishing process starts immediately after the concrete is poured. Products like Confilm (moisture evaporator retardant) and Volcomp-20 (surface sealant) are utilized to assist with this process.

APPLIED RESEARCH BUILDING

DATE: 11/29/21-12/05/21

PHASE: Shoring and Decking



Level 2 Deck Stripping



Additional Shoring Towers Delivered for Level 3

Fun Fact:

The A-Frame Shoring Towers (Atlas System) are pre-fabricated off-site. This process makes it easier for the field crew to assemble and start setting the plywood sheets for the concrete form-work.

Due to limited site access/storage, these towers get moved up as decks get poured to start the decking activity of the next floor, creating maximum efficiency.



APPLIED RESEARCH BUILDING

DATE: 11/29/21-12/05/21

PHASE: Vertical Structure



Mechanical/Plumbing Sleeves And Electrical In Columns



Forming and Pouring Level 2 Columns

Fun Fact:

The vertical structure must be poured prior to the start of the decking process for two reasons: one is to support the deck; and two, the space around each column needs to be free to allow workability and form support.



McCarthy + SmithGroup
ARB Design Build Team



APPLIED RESEARCH BUILDING

DATE: 11/29/21-12/05/21

PHASE: **What's next?!?**

**COMING
SOON**

- Level 2 Vertical Structural Pours.
- SOG Initial Grind and Protection.
- Structural Steel.
- Level 3 Shoring.
- Interior and Exterior Priority Wall Framing.
- Level 3 Decking and Sheeting.
- Level 3 Reinforcing
- Level 3 Deck Plumbing and Mechanical Rough-In.
- Architectural Building Mock up.



McCarthy + SmithGroup
ARB Design Build Team