

# University of Arizona

Andrew Weil Center for Integrative Medicine

Construction Project Update

September 22, 2022

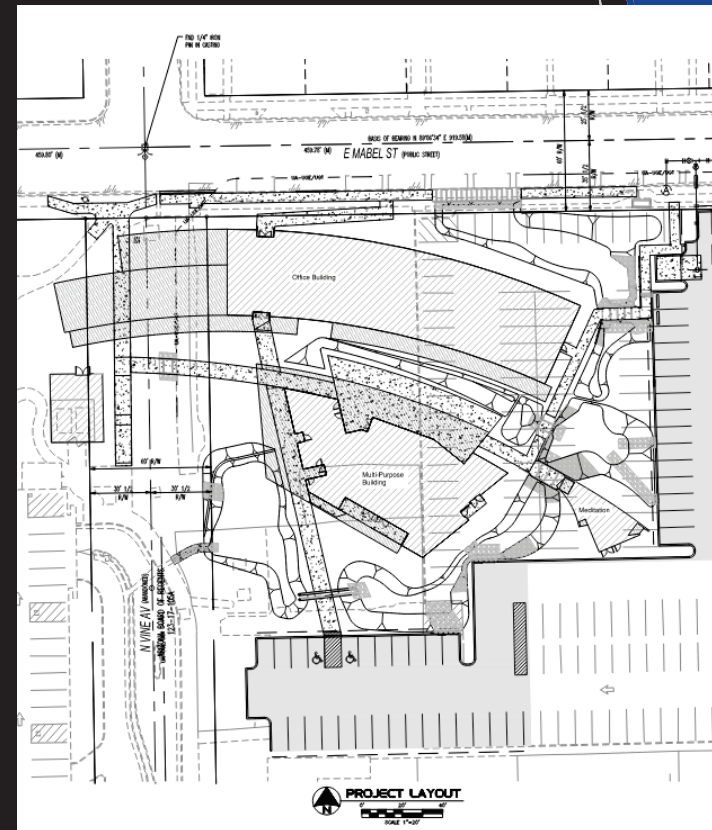


# PROJECT LOCATION AND LOGISTICS

The Andrew Weil Center for Integrative Medicine project is located on the corner of Mabel and Cherry, between the Bioscience Research Laboratories and the Highland Garage.

The Project includes the construction of three buildings - the Office Building, the Multi-purpose Building, and the Meditation Building.

Each structure is built with exposed natural materials, including concrete, concrete masonry units (CMU), steel, and glass. Surrounded by native Sonoran Desert plantings, these materials help the building blend into the natural landscape.



# PROGRESS PICTURES

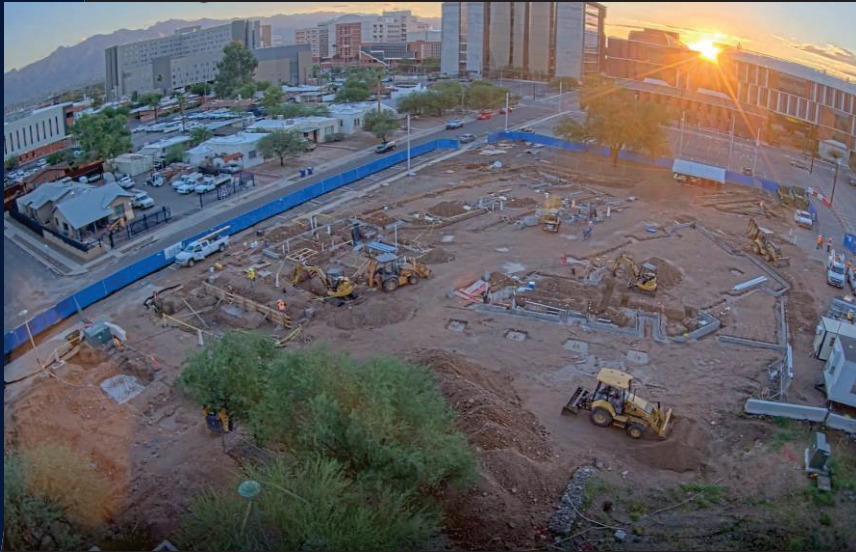


The entire concrete foundation for the Multi-Purpose building was placed in one day. Due to our wetter than normal monsoon season the Office Building foundation had to be broken up into 5 concrete placements.

The CMU wall erection has begun at all 3 buildings.



# PROGRESS PICTURES

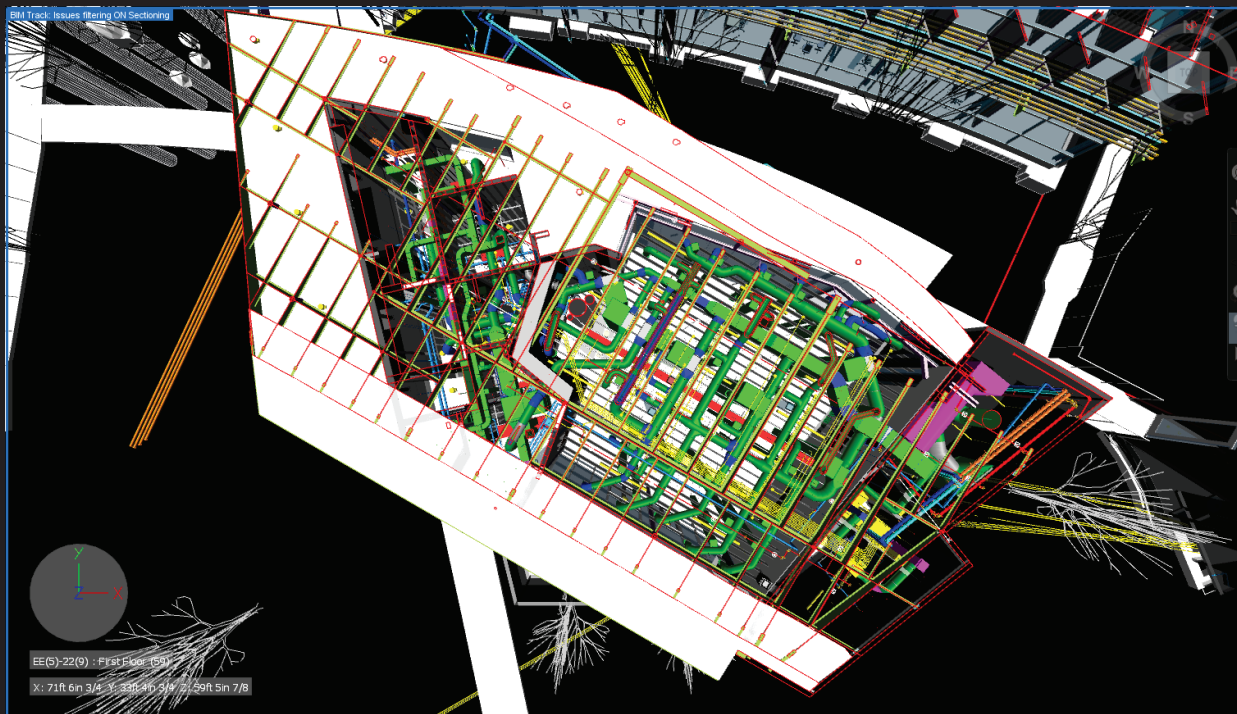


Underground utilities are being installed in the Office Building and Multi-Purpose building as well as across the site to main tie-in points.

Keep up with the project in real-time by looking at the live footage on the UA PDC website.



# PROGRESS PICTURES



The mechanical, electrical, and plumbing (MEP) coordination efforts through Building Information Modeling (BIM) are wrapping up this month. The model will then be used to verify work in the field.

# DID YOU KNOW...

The Multi-Purpose Building foundation placement was over 100 cubic yards of 4000 psi concrete! Psi is a measure of the pressure each square inch of the concrete can withstand. Concrete reaches 90% of its strength within 1 month but will continue to get stronger for decades!

