

# University of Arizona

## Arizona Public Media New Facility

### The Paul and Alice Baker Center for Public Media

#### Construction Project Update – August 2024



# CURRENT SITE OVERVIEW



# QUALITY MOMENT



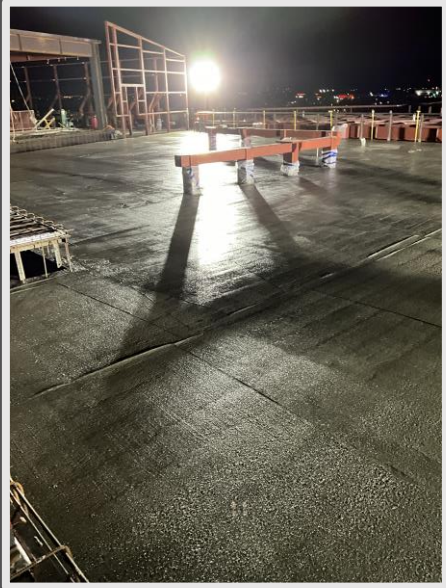
Approved Mockup (polished)



Level 2 floor with water

This month the grinding of the concrete floor slabs was complete. The finished, polished floors will look like the mockup on the left. The water in the picture on the right provides a representation of what the floor will look like once it is polished at the end of the job.

# PROGRESS UPDATE



Studio A Roof



Level 3 West



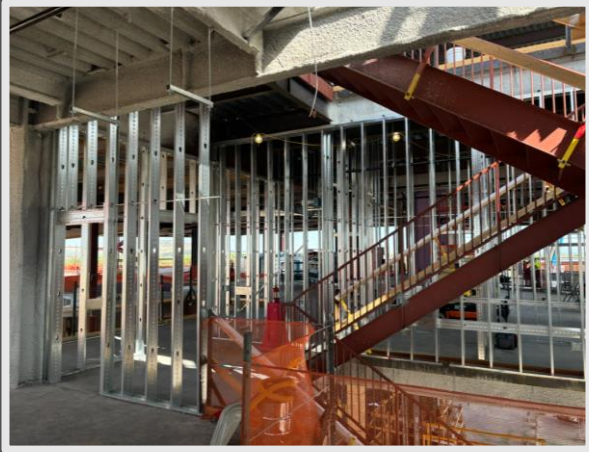
Floating Slab



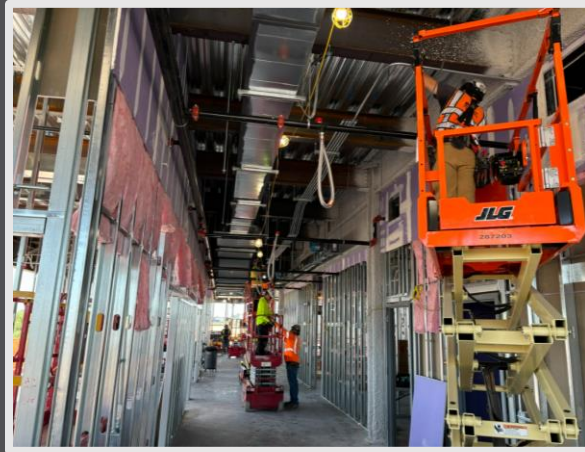
Level 1 West

This month the concrete on the West side has made a lot of progress. The concrete on the roof of the large television studio, Studio A, level 3 west, and level 1 west.

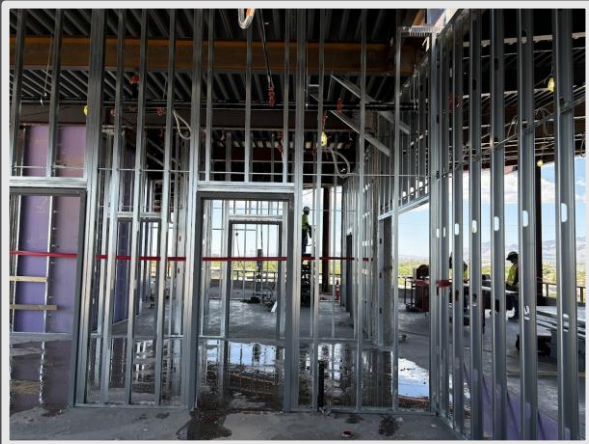
# PROGRESS UPDATE



Level 2 Framing



Corridor with top out and utilities



Level 3 Framing



Top out

The framing of interior walls began in August with the priority walls (corridors and electrical rooms) on Level 2 East side, followed by “top out” of the drywall, installing the top section of drywall where it would be difficult to install later because of utilities near the wall. Interior framing also continued on Level 3 and Level 1.

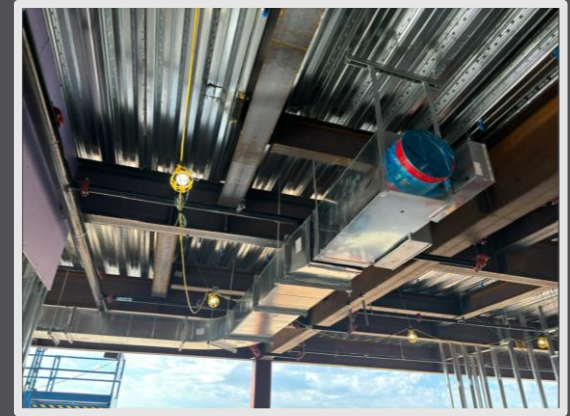
# PROGRESS UPDATE



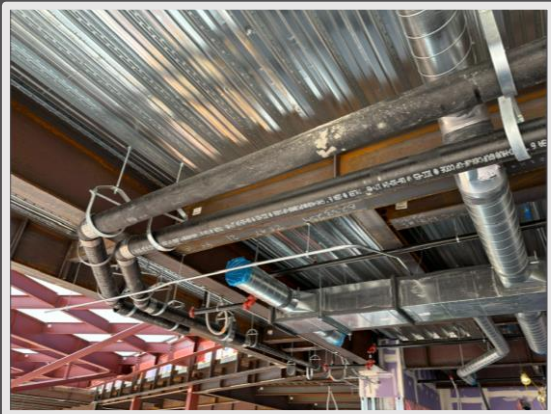
MEP Material Staging



Mechanical Ductwork



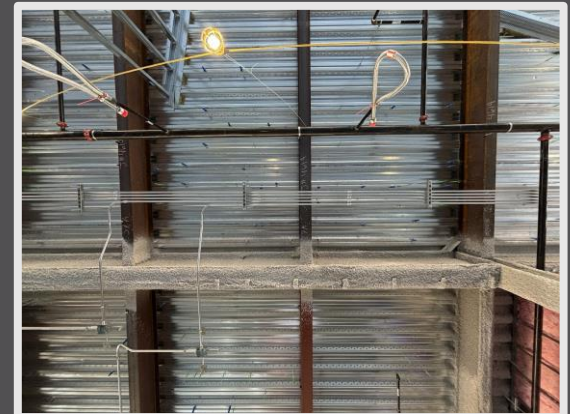
Mechanical Ductwork and Fire Sprinkler



Plumbing Piping



Electrical and Mechanical



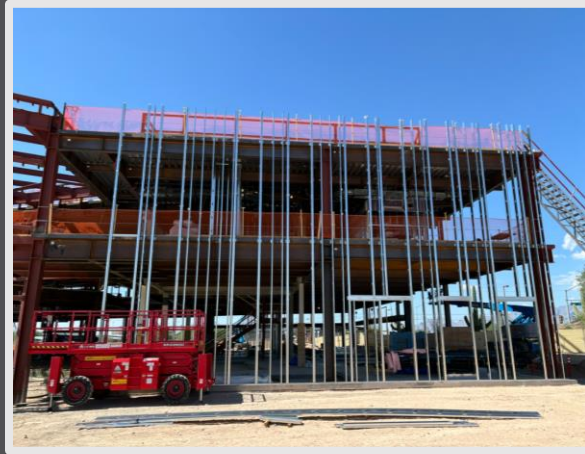
Electrical and Fire Sprinkler

The mechanical, electrical, and plumbing (MEP) and Fire Sprinkler rough in has begun on the East side of the building.

# PROGRESS UPDATE



Start of exterior framing



Exterior framing



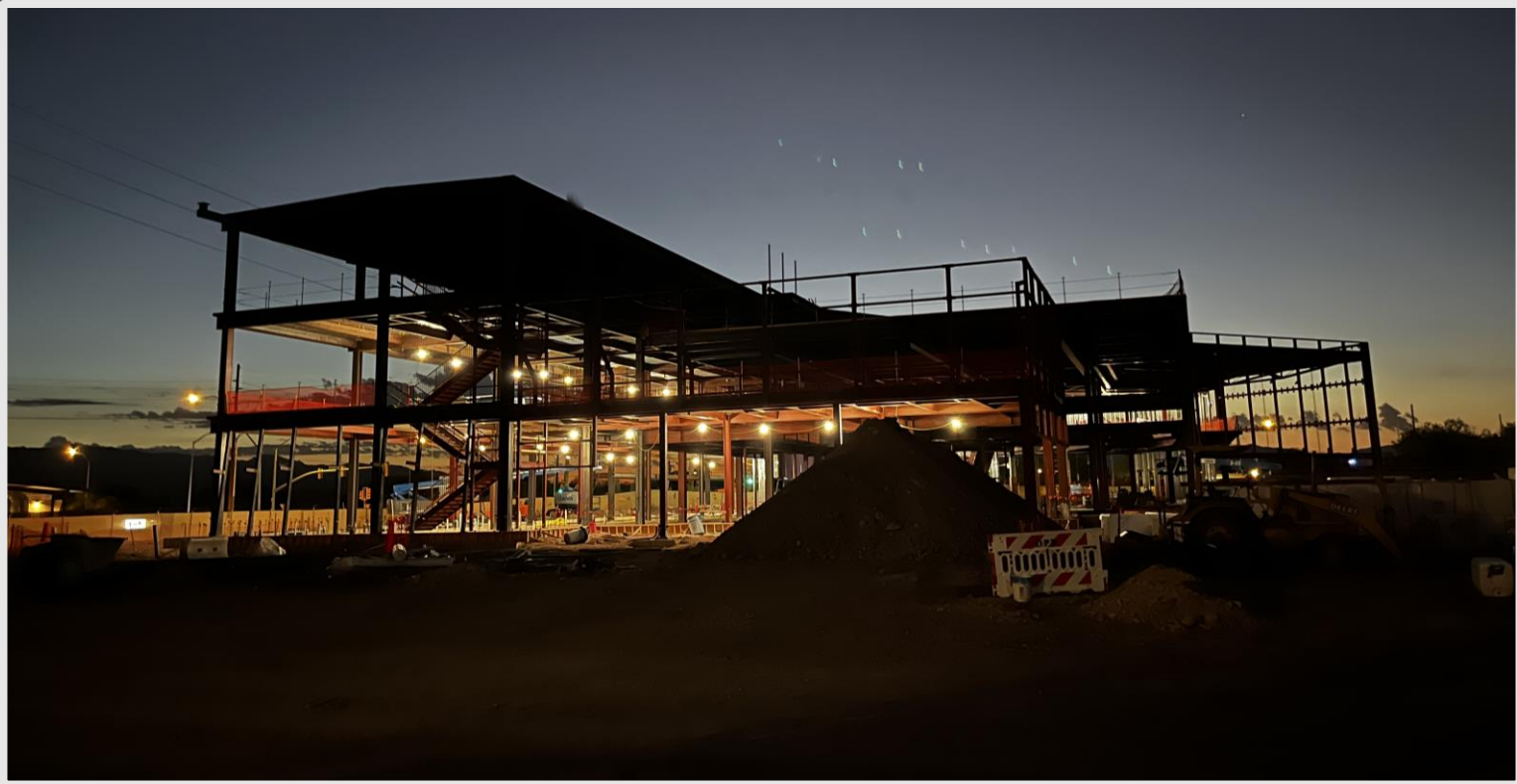
Start of sheathing



Sheathing

Exterior framing and sheathing is underway. The building will be purple as it is sheathed. Sheathing is the layer of material attached to the exterior framing of a building providing structural support and a base for exterior finishes. The exterior finish is the metal panels that are shown in the rendering on the first page.

# LOOKING AHEAD



In September, the remaining interior concrete slabs will be placed, the waterproofing on the exterior of the building will begin, the roofing will start, and the interior MEP work will continue.

You can always keep up with what is happening on site by checking out the live construction feed on the UA PDC website. [Project Camera](#)