

University of Arizona

Arizona Public Media New Facility

The Paul and Alice Baker Center for Public Media

Construction Project Update – October 2024



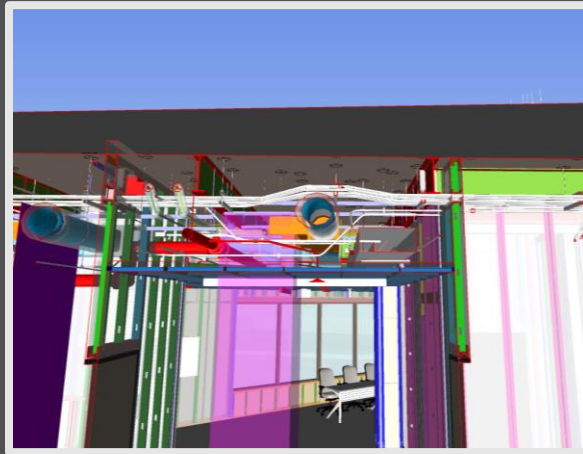
CURRENT SITE OVERVIEW



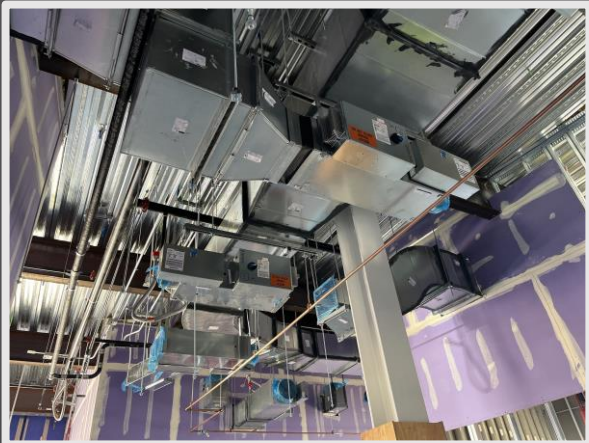
PROGRESS UPDATE



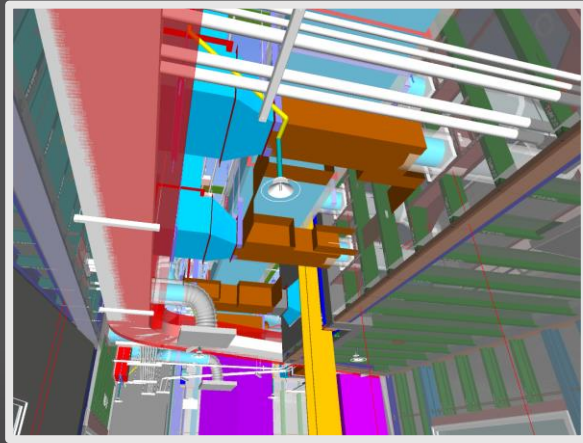
Conduits offsetting to allow for the duct work to fit as planned in the model



Model view of the area to the left showing the duct work under the conduits



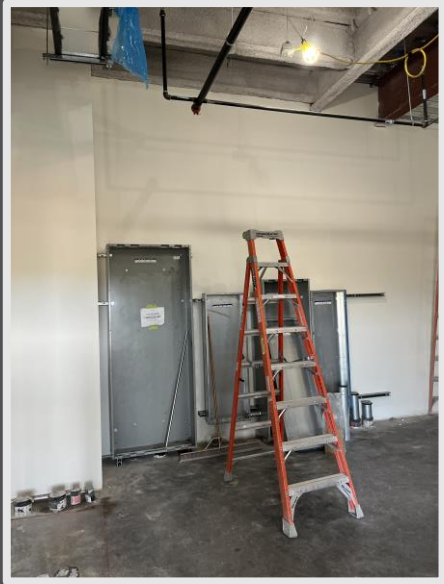
Mechanical ductwork in the field



Model view of the mechanical ductwork

This month, overhead work on the mechanical, electrical, and plumbing (MEP) systems is ongoing in nearly every area of the building. The BIM coordination, mentioned in a previous month, has facilitated the smooth installation of the overhead work by coordinating all utilities virtually before installation begins.

PROGRESS UPDATE



Empty panel cans



Level 3 electrical room



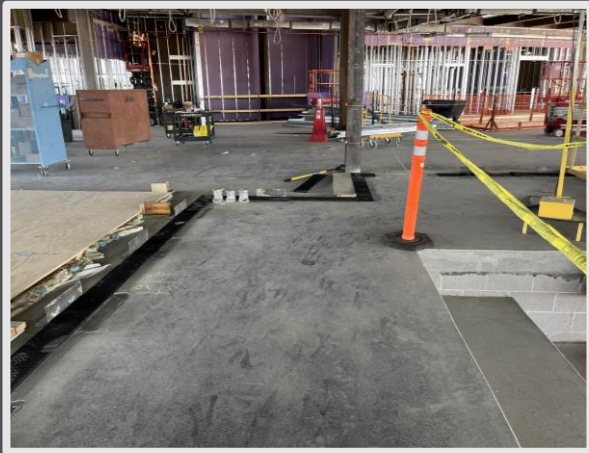
Level 1 electrical room



Level 2 Electrical Room

Significant progress is being made in the electrical rooms with the installation of the panels.

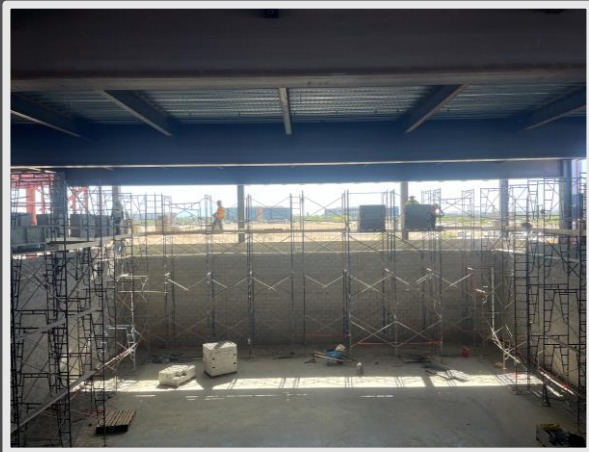
PROGRESS UPDATE



Isolation pad laid out for the CMU wall



Beginning of CMU wall



CMU in progress



CMU in progress

The walls of the large TV Studio, Studio A, are constructed from concrete masonry units (CMU). These walls are uniquely designed as part of the studio's acoustically isolated system, meaning that the walls cannot have a rigid connection to any part of the structure.

This will prevent the transfer of sound in the form of vibrations. Standing over 30 feet tall, these walls sit on an isolation pad to inhibit sound transmission.

PROGRESS UPDATE



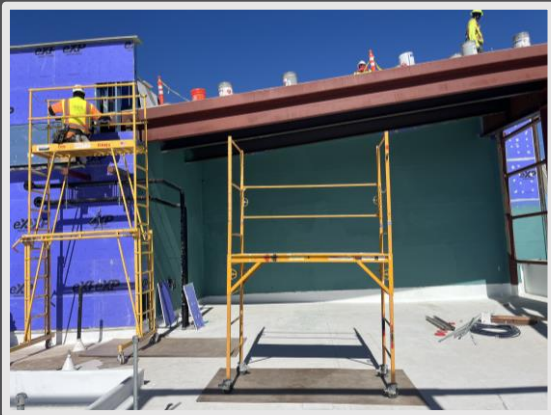
Sheathing



Sheathing



Framing



Vapor barrier over sheathing above



Vapor barrier over sheathing above

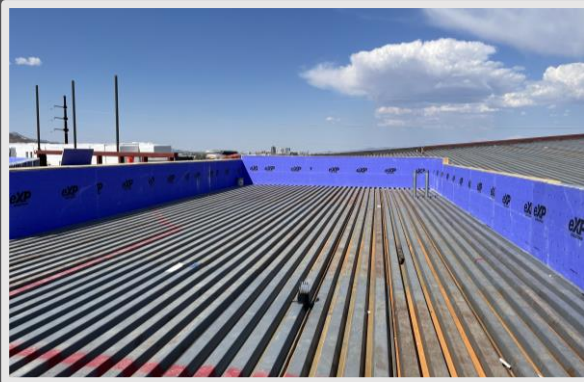


Framing and sheathing

The exterior framing, sheathing, and vapor barrier are ongoing.

PROGRESS UPDATE

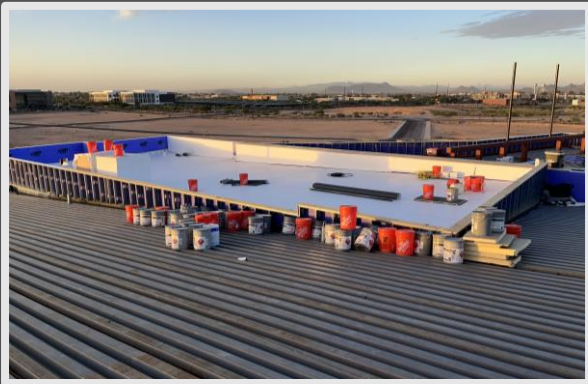
High roof
before roofing



High roof roofing
in progress



High roof roofing
complete

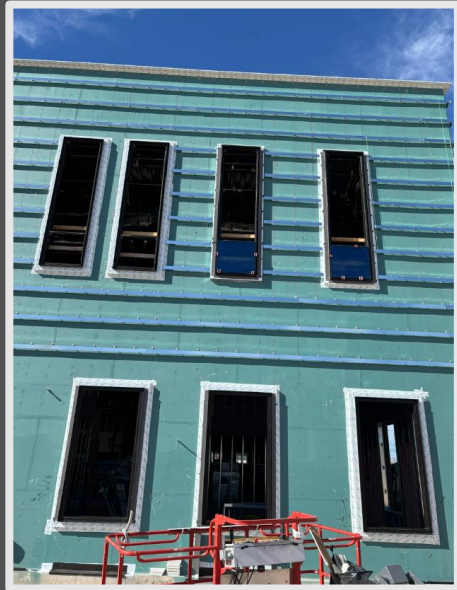


“Tippy-top” roofing
in progress



This project features multiple roof levels. Roofing has been completed on half of the middle roof and a section of the high roof. Meanwhile, work has begun on the 'tippy-top' roof, which is the sloping section at the northeast peak of the building.

PROGRESS UPDATE



Glazing and prep for metal panels



Mineral wool insulation



Glazing, mineral wool, and brick ties for the masonry veneer



Mineral wool insulation

The preparations for the exterior skin are underway, and the first of the glazing was installed.

LOOKING AHEAD



Looking forward to November, interior and exterior framing, roofing, MEP rough-in, vapor barrier, and the exterior finishes will continue making progress. Next month, the air handling units and chillers will be set.

You can always keep up with what is happening on site by checking out the live construction feed on the UA PDC website. [Project Camera](#)